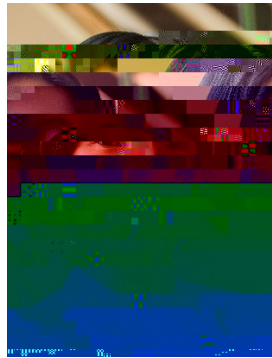




Research Seminar

A Scale Invariant Approach for Signal and Image Recovery



Dr. Yifei Lou
Associate Professor
Mathematical Sciences Department
University of Texas Dallas

Friday, February 26, 2021
11:00 a.m. – 12:15 p.m.

Zoom link: <https://smu.zoom.us/j/95095343594>

Abstract: I will talk about the ratio of the L_1 and L_2 norms, denoted as L_1/L_2 , to promote sparsity. Due to the non-convexity and non-linearity, there has been little attention to this scale-invariant model. Compared to popular models in the literature such as the L_p model for $p \in (0, 1)$ and the transformed L_1 (TL1), this ratio

model is